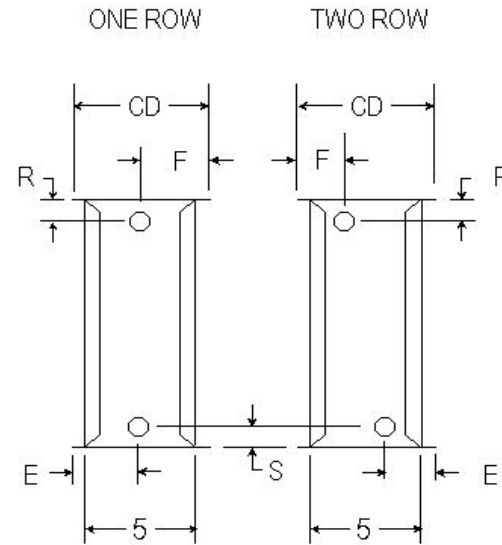
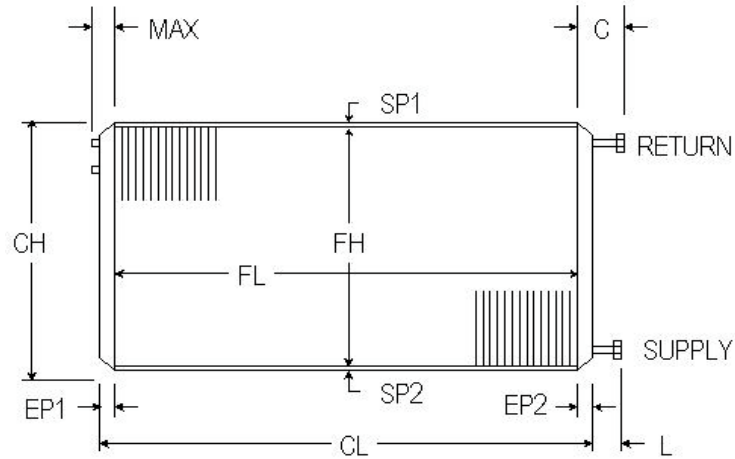
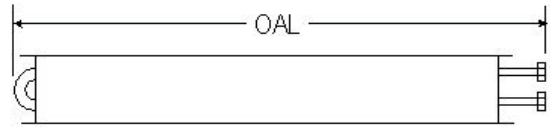


SLIP DRIVE BOOSTER

ROWS AVAILABLE	1	2	
FPI AVAILABLE	8	10	12
TUBES OD & Wall Thickness <i>COPPER ONLY</i>	5/8	.020	
	1/2	.016	
FINS Material & Thickness	ALUM.	.006	.010
	COPPER	.006	
CASING	16 GA. GALV. STEEL		
	16 GA. STAINLESS STEEL		
MODEL NO. (Example)	SP - Slip & Drive 8 - 8 fpi 1 - 1 row 12 - Fin Height 24 - Fin Length N - Non Headered		



DIMENSIONAL DATA IN INCHES

$OAL = MAX + FL + C$

CONNECTION SIZES

ITEM	QTY	ROWS	FPI	SP1	FH	SP2	CH	EP1	FL	EP2	CL	CD	MAX	C	OAL	SUPPLY	RETURN	CU
				1/16		1/16		3/16		3/16		6	2 1/4	5				

P.O. #							CUSTOMER						
W.O. #							MODEL NO.						
APPROVED BY							TAG:						
DATE							NOTES						



PRECISION COILS

13745 Hwy. 59 North • Somerville, TN 38068
 Phone: 901.465.5900 • Fax: 901.465.5909
 www.precision-coils.com

Performance Data	CFM		EDB/EWB		LDB/LWB		CAPACITY		EWT		LWT		GPM	
------------------	-----	--	---------	--	---------	--	----------	--	-----	--	-----	--	-----	--